



# RAIL MOUNT ACCESSORIES SYSTEM



Rail Mount TFR-404 | Fits 1-1/4" Rail Diameter

Part # TFR-404 SKU: 09-974-865

Rail Mount TFR-402 | Fits 7/8" - 1" Rail Diameter

Part # TFR-402 SKU: 74-658-191

TFR Rail Mounts are designed to attach various Polyform US stainless steel products to boat rails. They're available in two sizes to fit a range of rail diameters and are compatible with several Polyform products including:

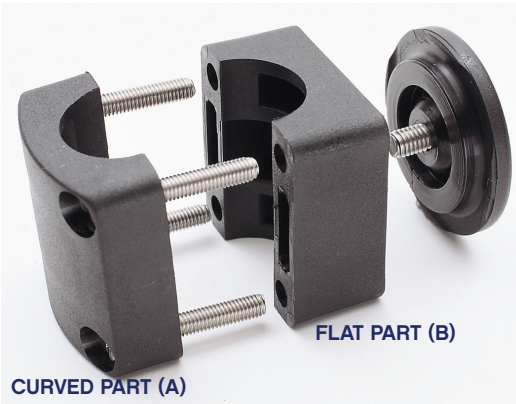
- Cup Holders
- Flag Holders
- True Fit Boat Fender Holders

NOTES:

TFR-404 fits boat rails with a diameter of 1-1/4"

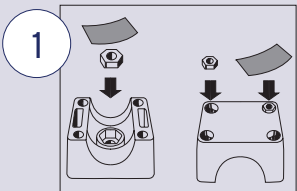
For boat rails with a diameter of 7/8" to 1" please use TFR-402 and place the included Rail Adapter around smaller diameter rails prior to mount attachment

A screwdriver is needed for tightening the assembly

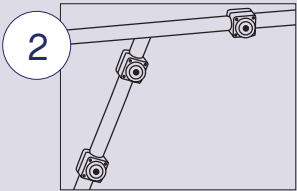


COMPONENTS	QTY.
Screws (long)	4
Nuts (small)	4
Screw (short)	1
Nut (large)	1
Swivel Disc	1
Curved Part (A)	1
Flat Part (B)	1
Rail Adapter	1

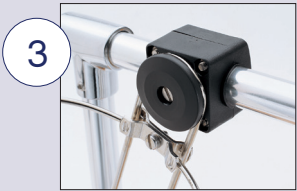
## ASSEMBLY STEPS



**FLAT PART (B)**  
Using tape to temporarily secure them, place the four small nuts into the recesses of Flat Part (B), and the large nut into Curved Part (A), as shown.



**ASSEMBLED RAIL MOUNTS**  
Place the Curved Part (A) on the outside of your boat rail. With the Flat Part (B) aligned on the inside of your boat rail, join the two parts together by inserting and tightening each of the four long screws. Tighten the Swivel Disc's center screw so it stays in place but remains adjustable.



**RAIL MOUNT WITH ACCESSORY ATTACHED**  
When you're ready to attach an accessory, simply remove the Swivel Disc's center screw, position the accessory between the Flat Part of the Mount and the Swivel Disc, then reinsert and tighten the center screw. Some accessories require multiple Rail Mounts for secure fitment.